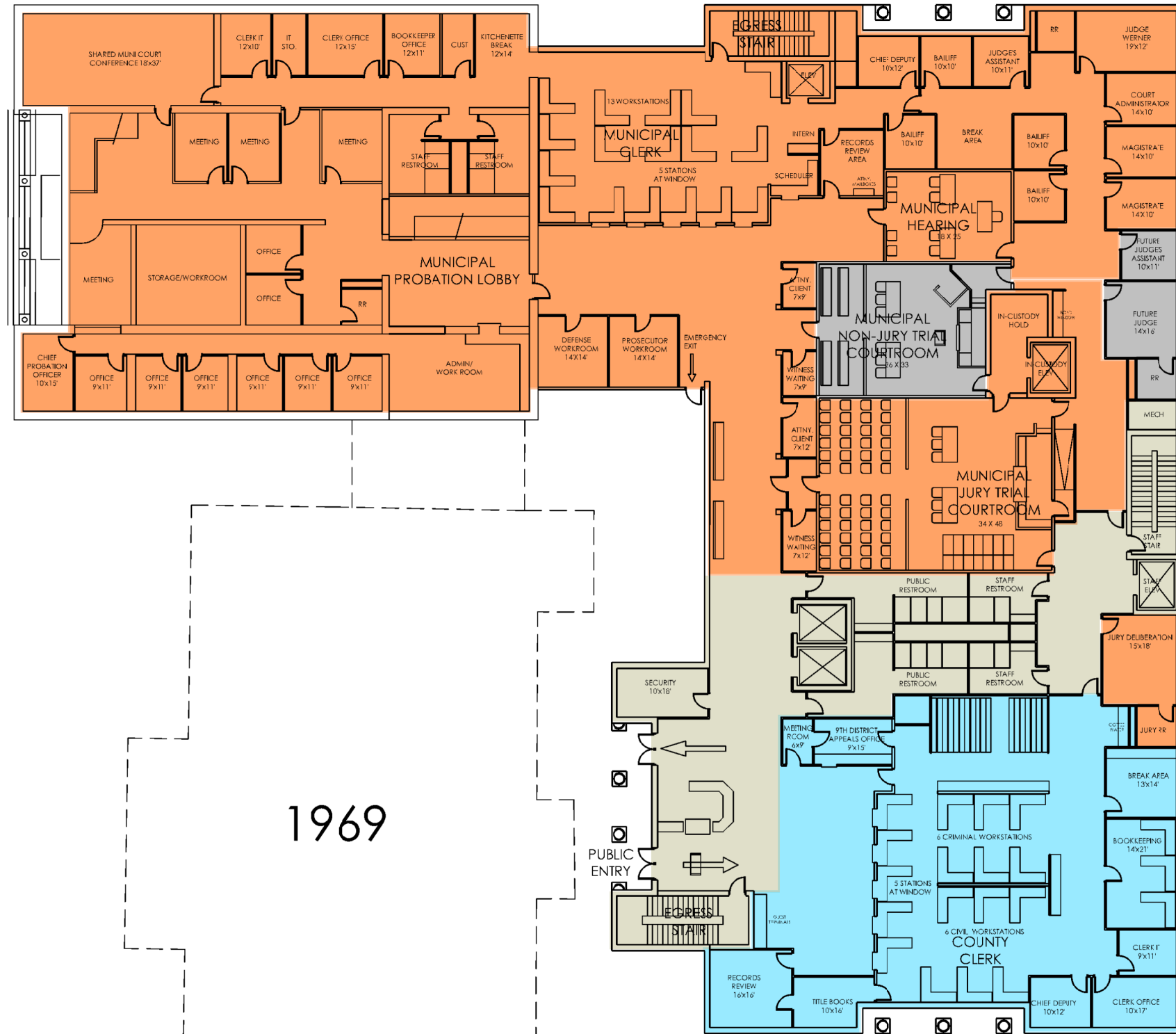


MUNI. & CO. CLERK RECORDS
 MUNI ADULT PROBATION
 PRISONER HANDLING
 JUVENILE PROBATION
 LAW LIBRARY
 STAFF SUPPORT

6,186 SF RENOVATION
 22,446 SF NEW CONSTRUCTION

- SALLYPORT: 9,510 SF
(SHARED BETWEEN MUNI/COUNTY)
- MUNICIPAL CLERK STORAGE: 1,860 SF
- LAW LIBRARY: 2,080 SF
- PROBATE STORAGE: 850 SF
- COUNTY CLERK STORAGE: 1,225 SF
- JUVENILE PROBATION: 3,224 SF
- SHARED: 8,535 SF
(BETWEEN MUNICIPAL / COUNTY)
- COUNTY COMMON SPACE: 340 SF

RENOVATION | NEW CONSTRUCTION



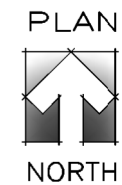
MUNICIPAL CLERK & COURT
MUNICIPAL PROBATION
COUNTY COURT CLERK

7,450 SF RENOVATION
22,446 SF NEW CONSTRUCTION

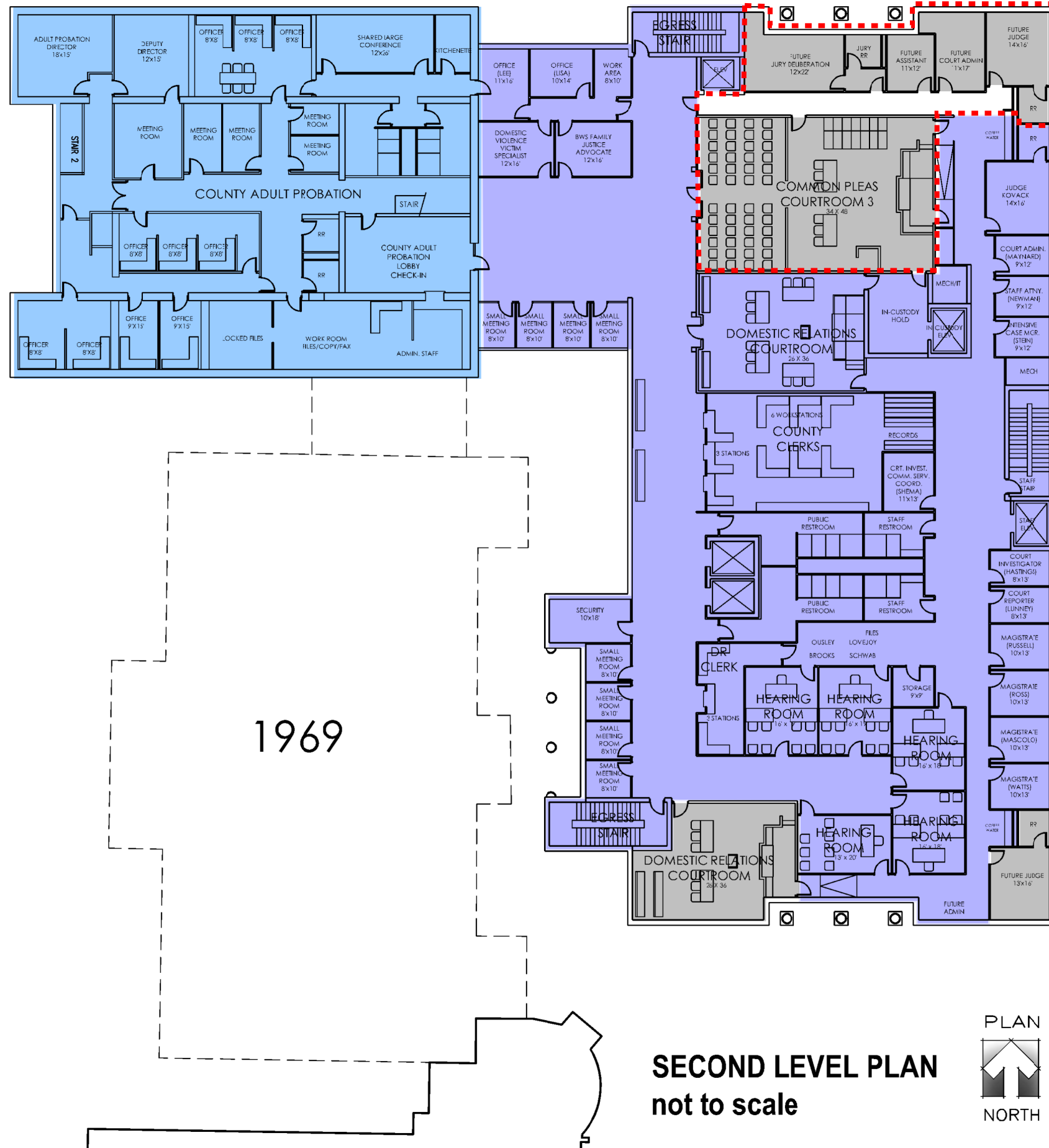
- MUNICIPAL COURT: 20,270 SF
- COUNTY CLERK: 5,420 SF
- SHARED: 4,200 SF
(BETWEEN MUNICIPAL / COUNTY)
- WHITE BOX/FUTURE: 1,270 SF
(NO FINISHES OR FURNITURE)

1969

FIRST LEVEL PLAN
not to scale



RENOVATION | NEW CONSTRUCTION

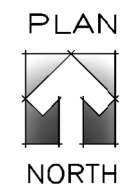


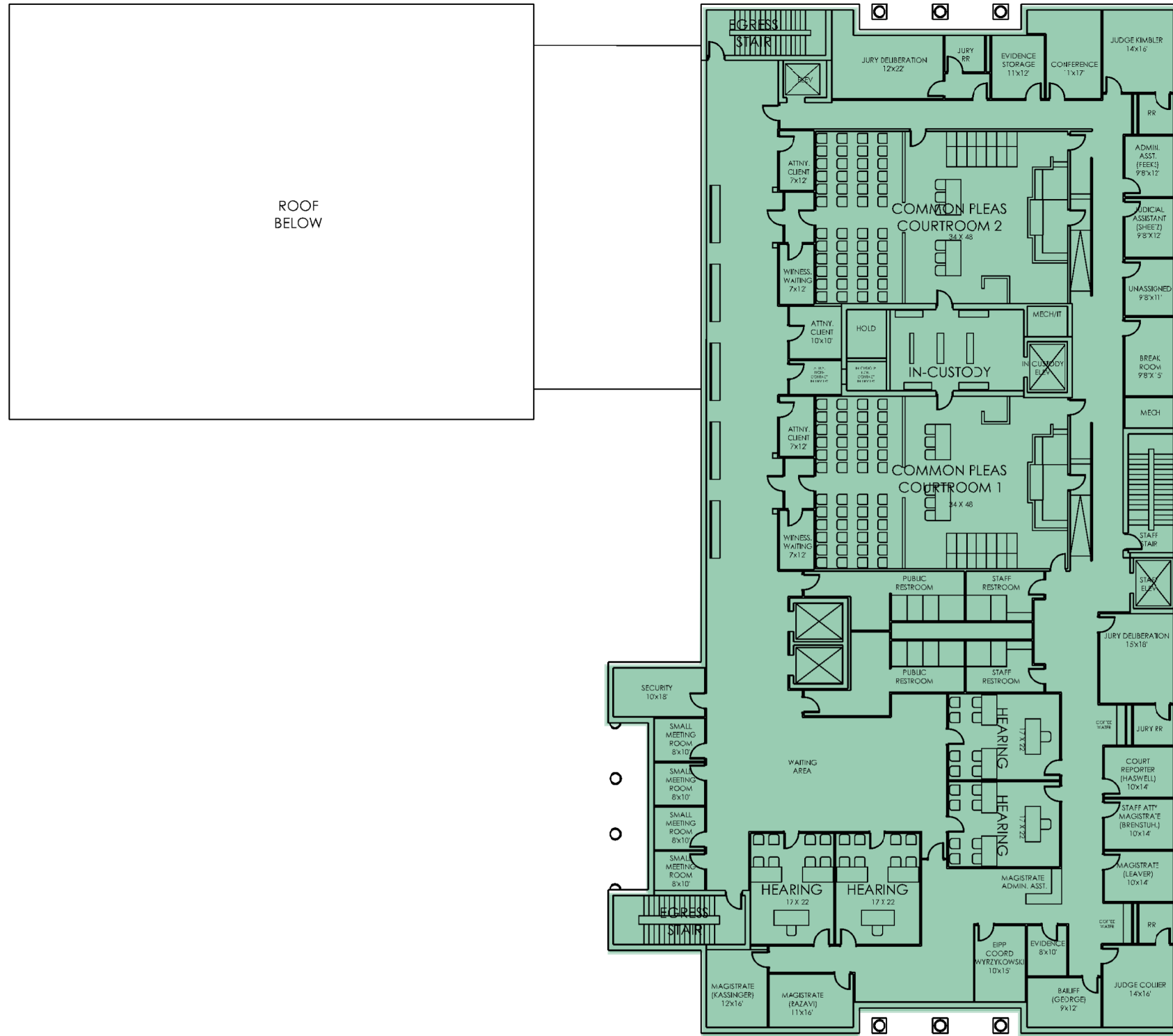
COUNTY ADULT PROBATION
 COUNTY COMMON PLEAS (FUTURE)
 DOMESTIC RELATIONS COURT

7,450 SF RENOVATION
 22,446 SF NEW CONSTRUCTION

- COUNTY ADULT PROBATION: 7,450 SF
- DOMESTIC RELATIONS COURT: 18,700 SF
- WHITE BOX/FUTURE: 3,900 SF (NO FINISHES OR FURNITURE)
- COMMON PLEAS FUTURE COURTROOM: 3,710 SF

SECOND LEVEL PLAN
 not to scale

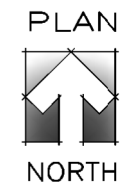


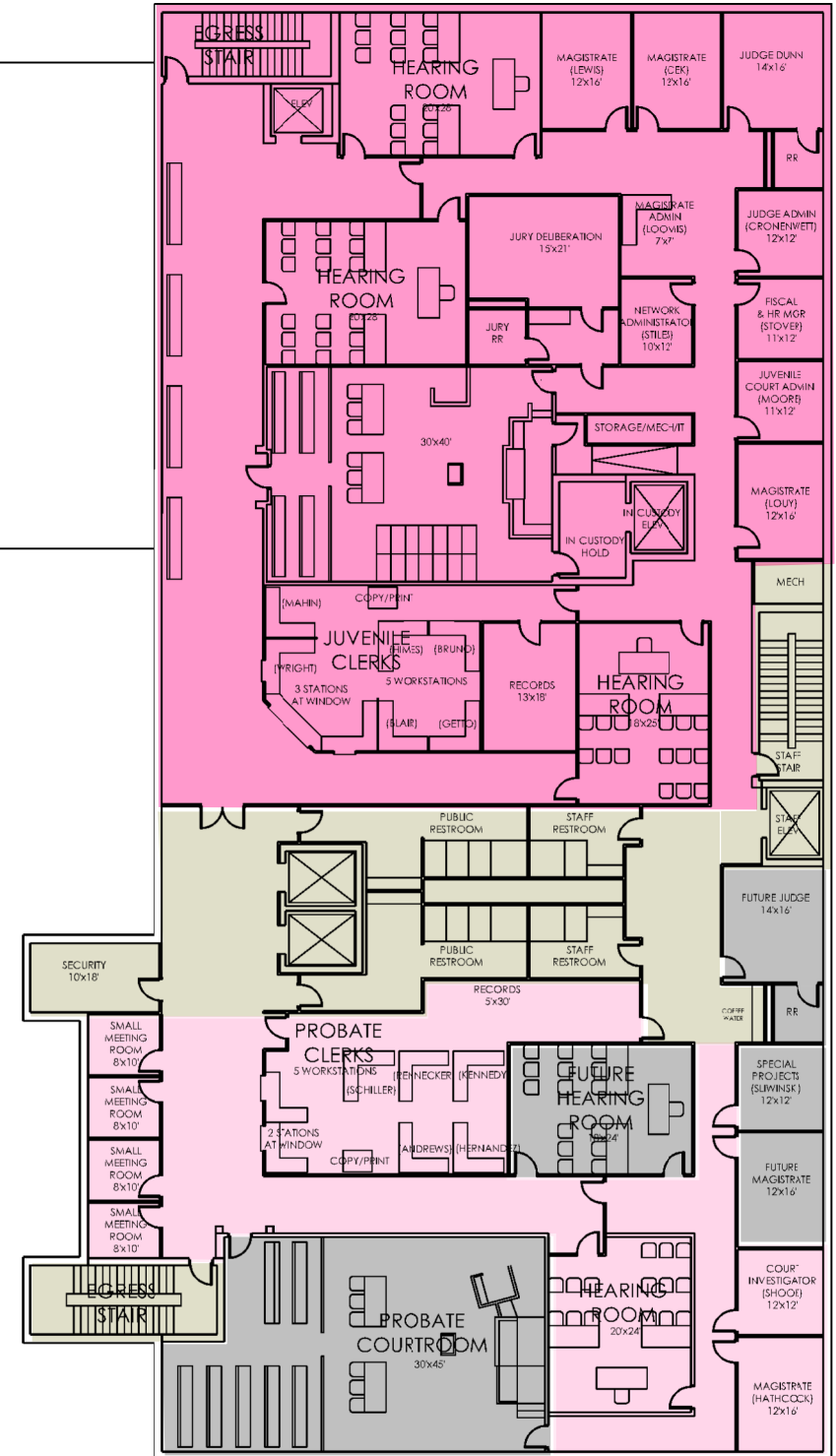
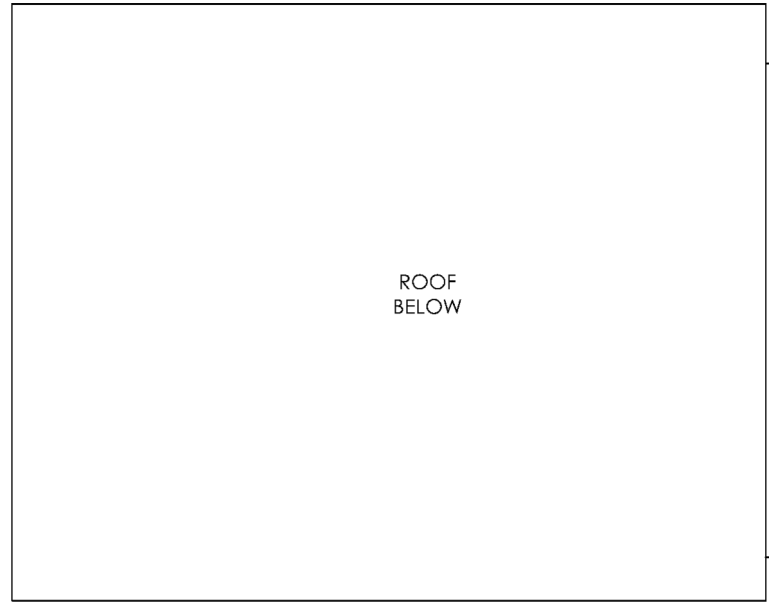


COMMON PLEAS COURT

20,027 SF NEW CONSTRUCTION

THIRD LEVEL PLAN
not to scale

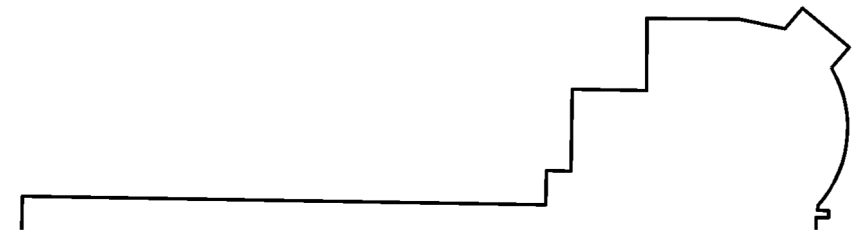




JUVENILE COURT
PROBATE COURT

20,027 SF NEW CONSTRUCTION

- JUVENILE COURT: 10,210 SF
- PROBATE COURT: 4,120 SF
- SHARED: 3,140 SF
(BETWEEN JUVENILE/PROBATE)
- WHITE BOX/FUTURE: 2,560 SF
(NO FINISHES OR FURNITURE)



FOURTH LEVEL PLAN
not to scale

