

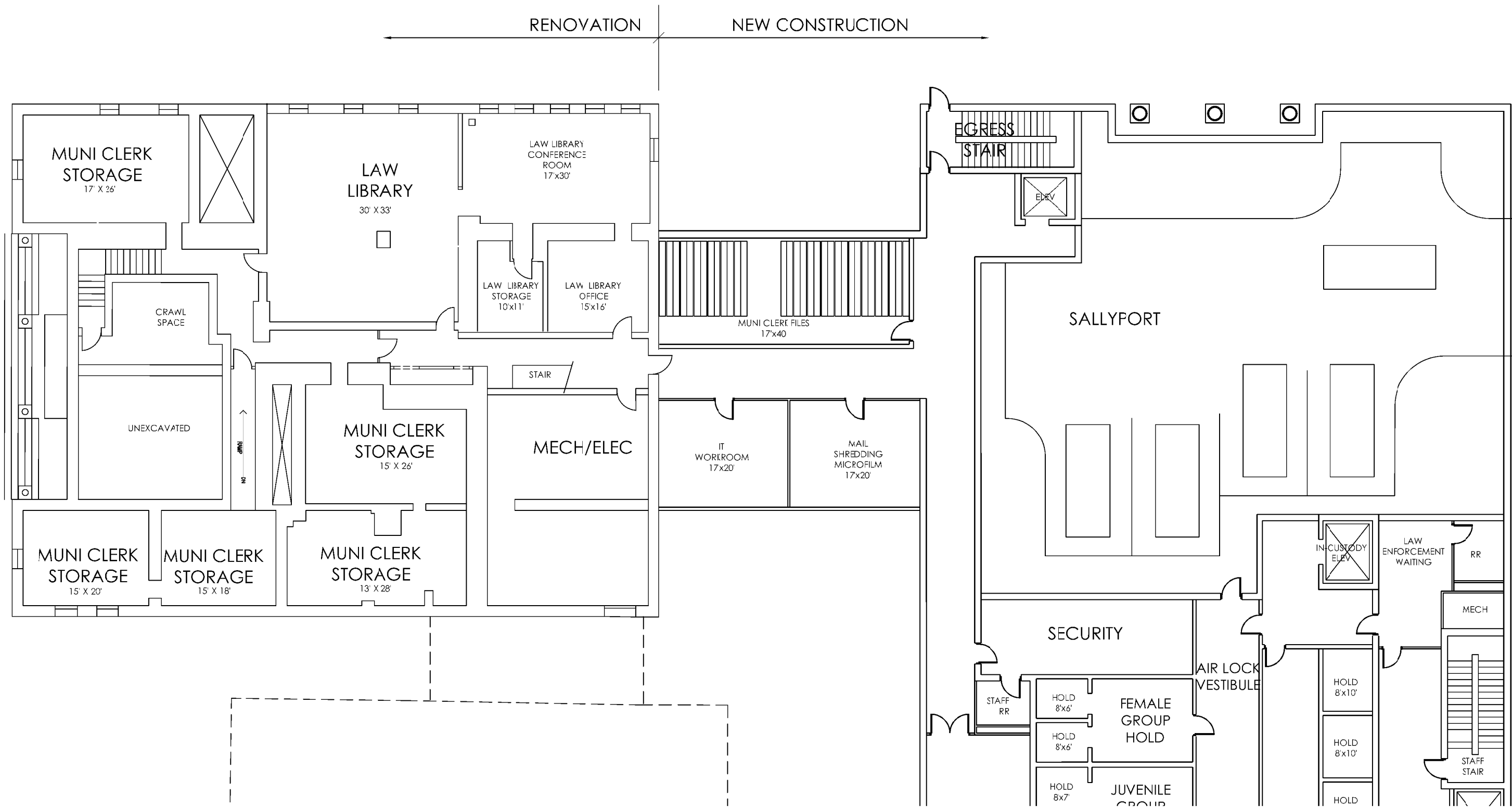
MUNI. & CO. CLERK RECORDS

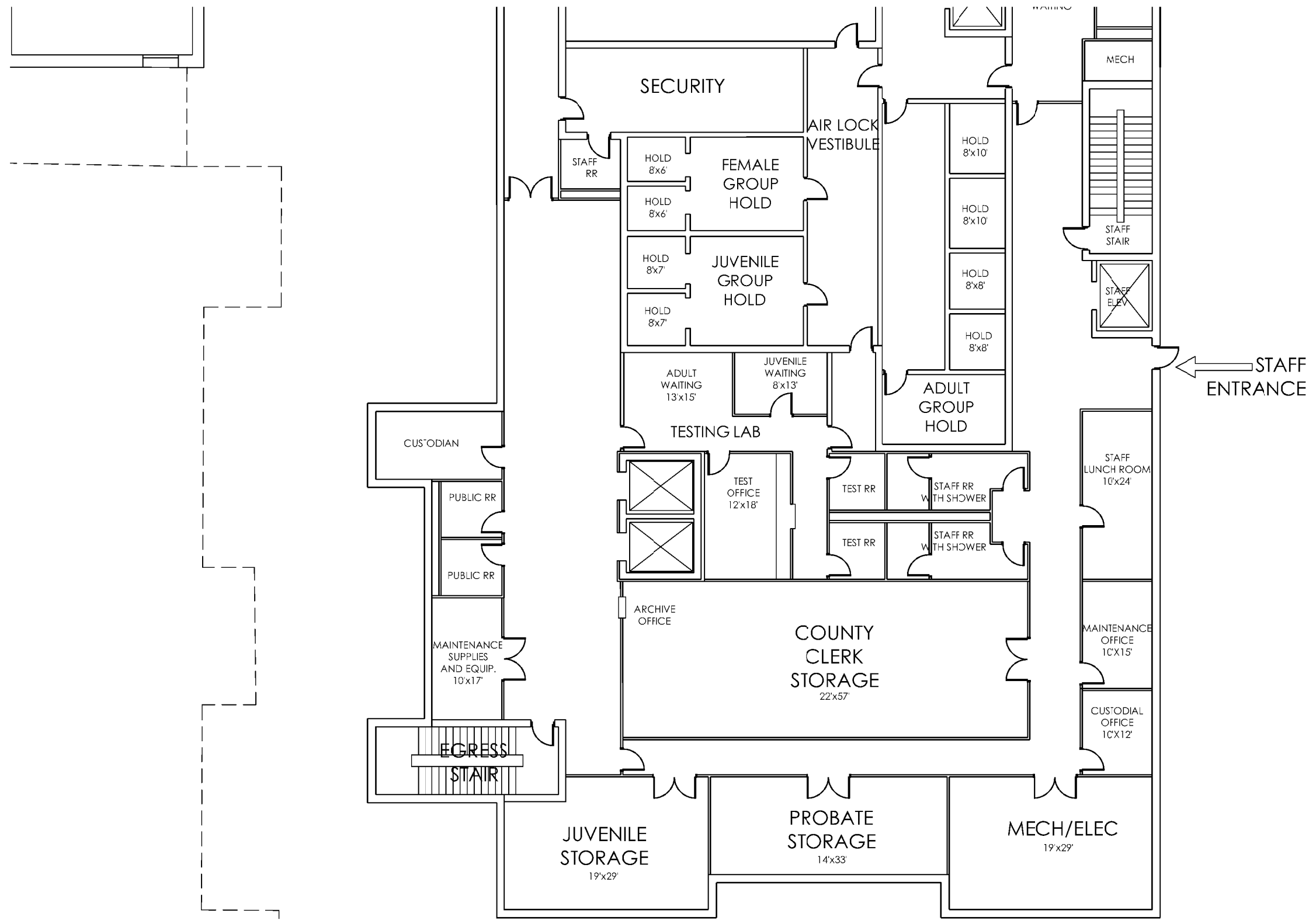
PRISONER HANDLING

LAW LIBRARY
STAFF SUPPORT

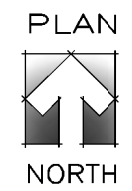
6,186 SF RENOVATION
21,900 SF NEW CONSTRUCTION

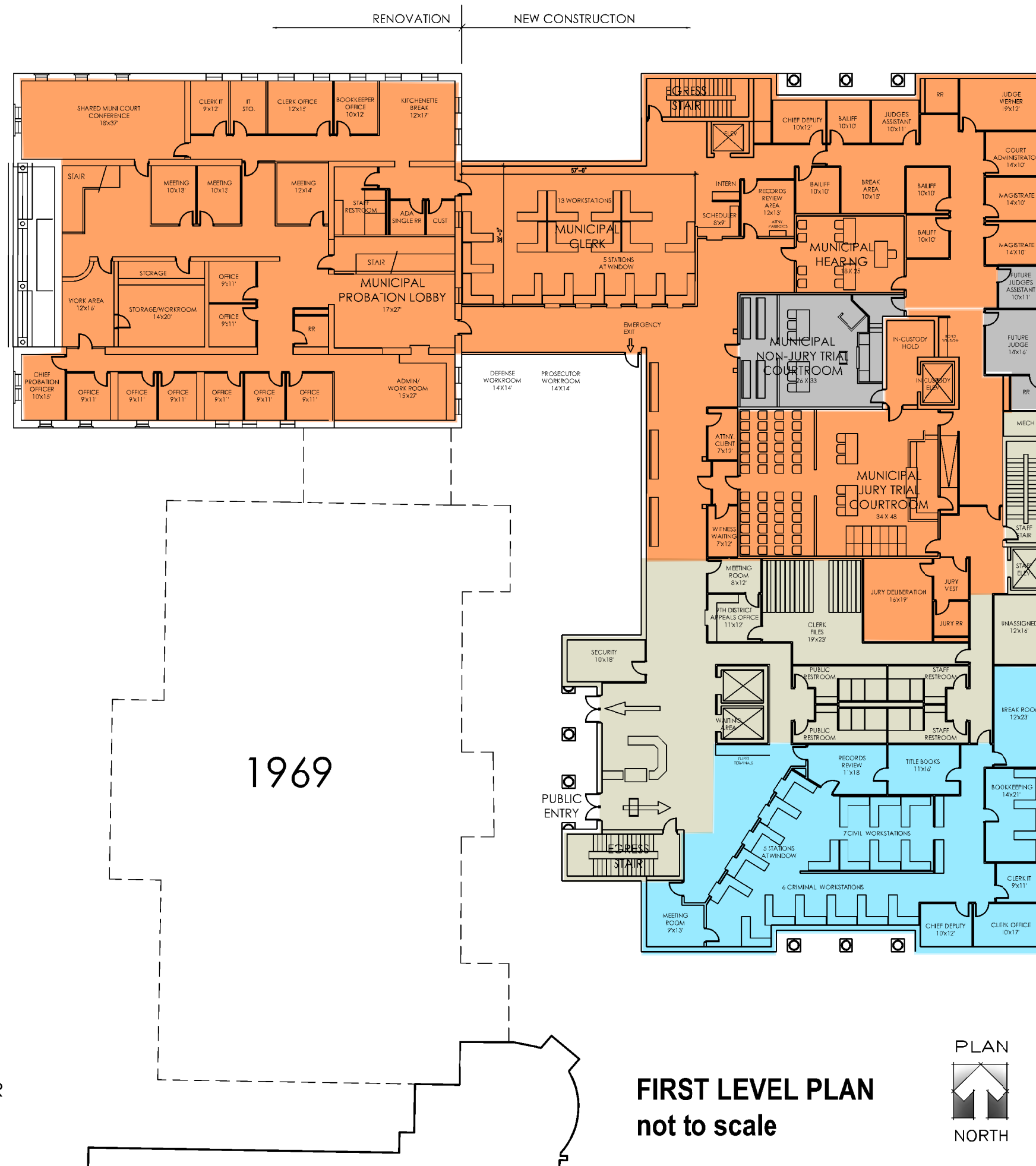
- SALLYPORT
(SHARED BETWEEN MUNI/COUNTY)
- MUNICIPAL CLERK STORAGE
- LAW LIBRARY
- PROBATE STORAGE
- COUNTY CLERK STORAGE:
- JUVENILE STORAGE
- SHARED
(BETWEEN MUNICIPAL / COUNTY)
- COUNTY COMMON SPACE





LOWER LEVEL PLAN
 1/16" = 1'-0"



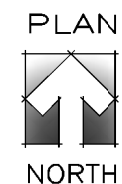


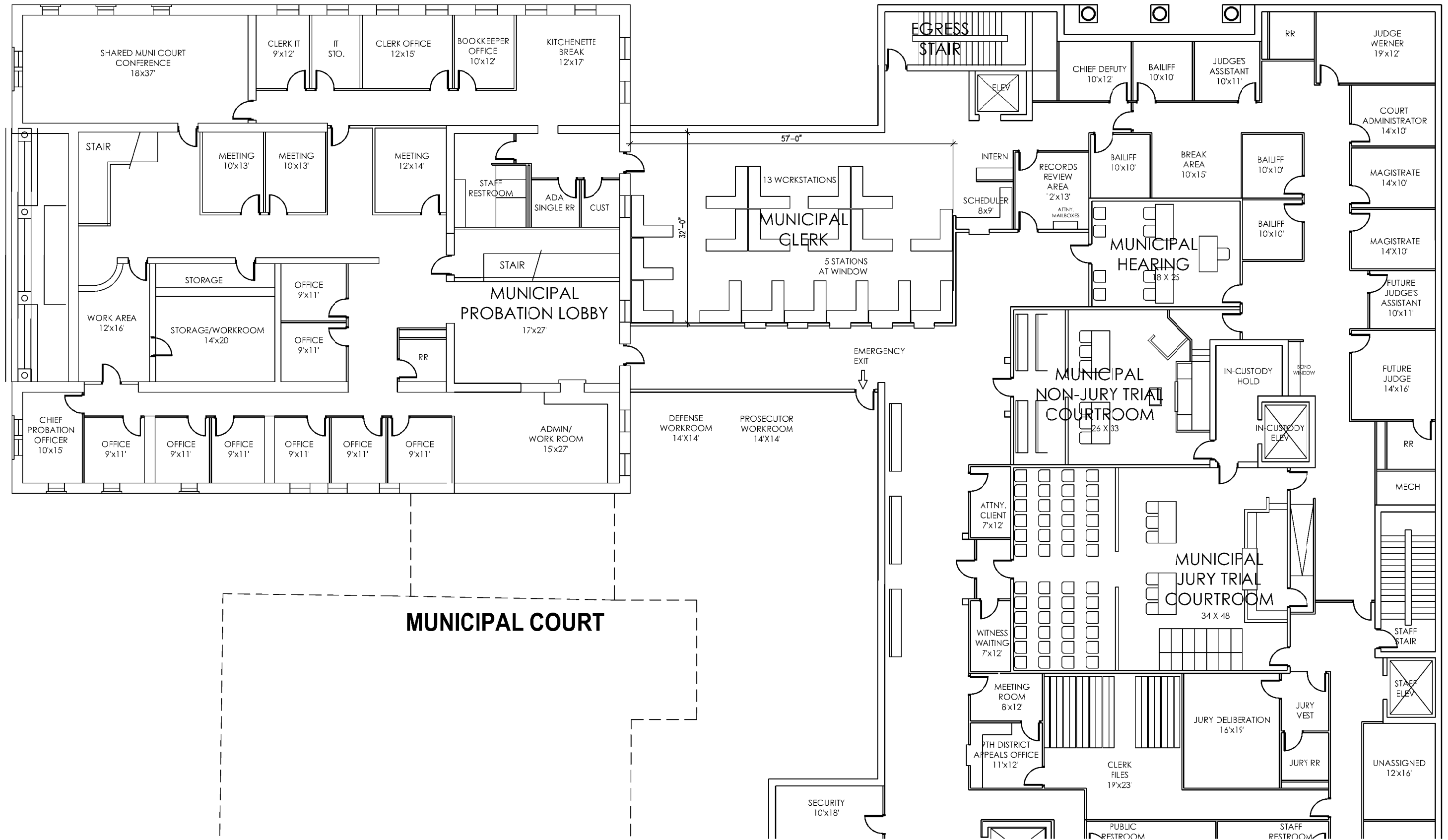
MUNICIPAL CLERK & COURT
 MUNICIPAL PROBATION
 COUNTY COURT CLERK

7,450 SF RENOVATION
 21,900 SF NEW CONSTRUCTION

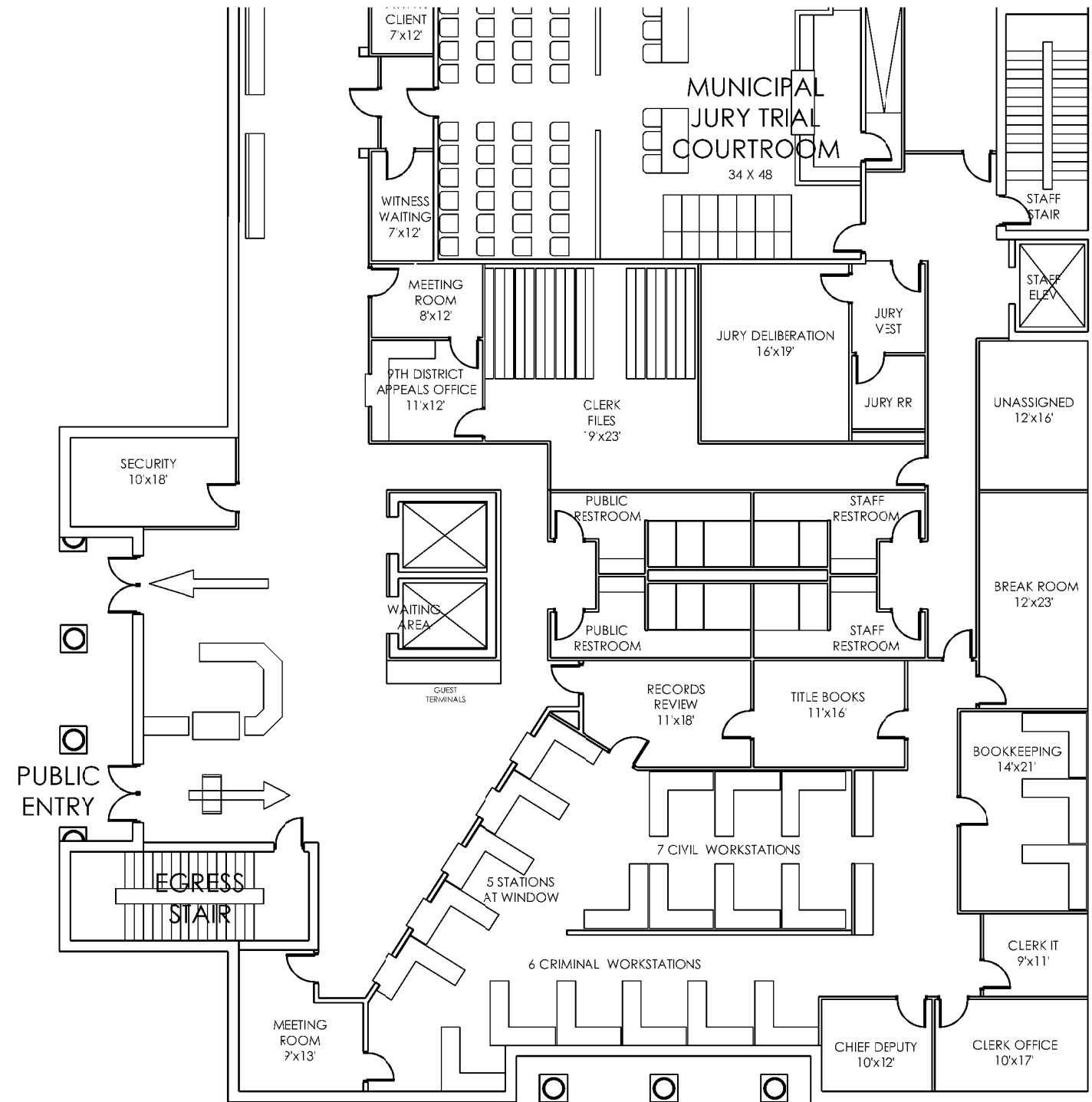
- MUNICIPAL COURT
- COUNTY CLERK
- SHARED
(BETWEEN MUNICIPAL / COUNTY)
- WHITE BOX/FUTURE: 1,270 SF
(NO FINISHES OR FURNITURE)

FIRST LEVEL PLAN
 not to scale



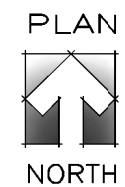


1969



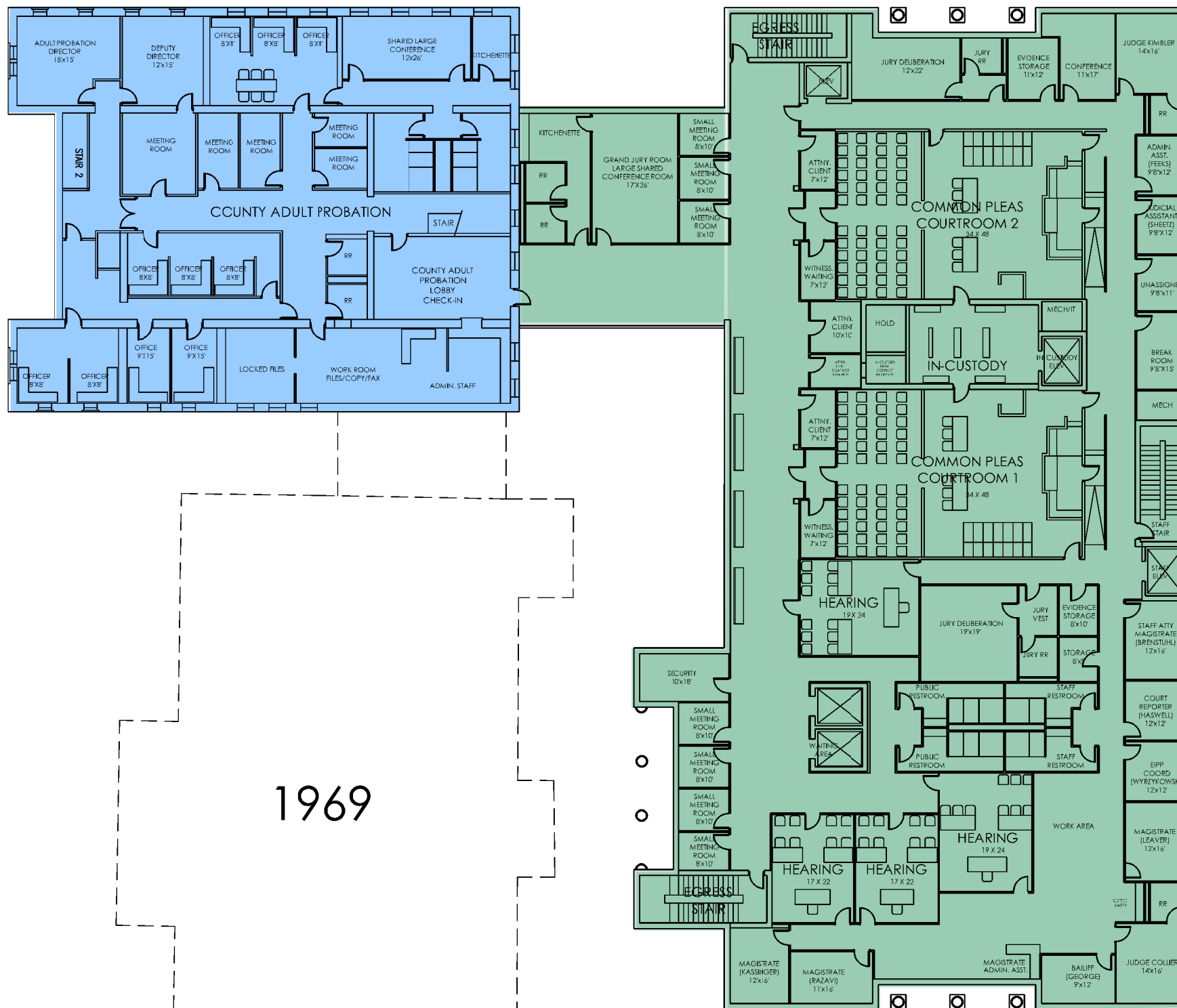
COUNTY CLERK

FIRST LEVEL PLAN
1/16" = 1'-0"



MEDINA COURTHOUSE
06-17-2020

RENOVATION NEW CONSTRUCTION



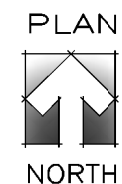
COMMON PLEAS COURT
COUNTY ADULT PROBATION

7,450 SF RENOVATION
21,900 SF NEW CONSTRUCTION

- COUNTY ADULT PROBATION
- COMMON PLEAS COURT

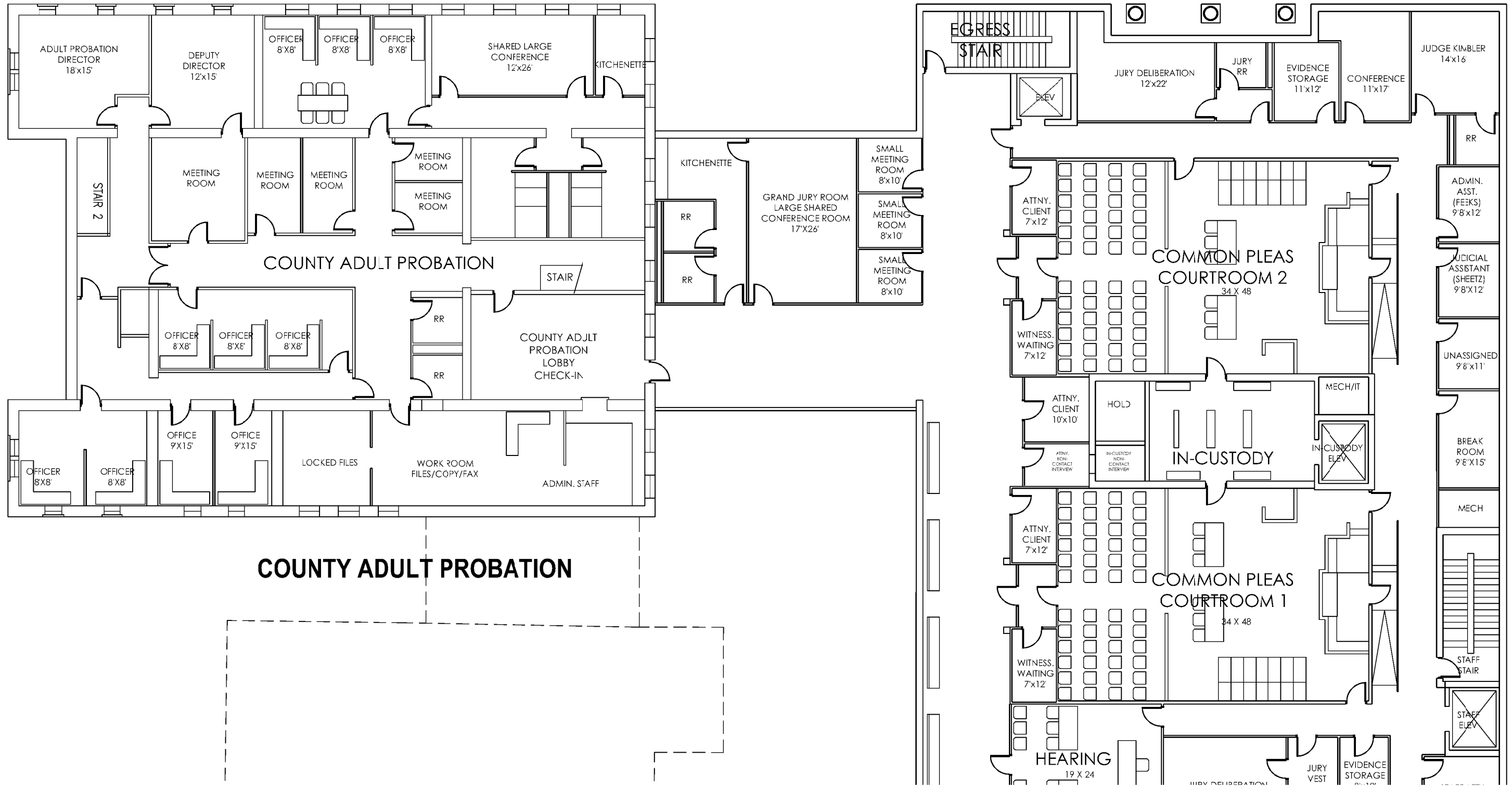
1969

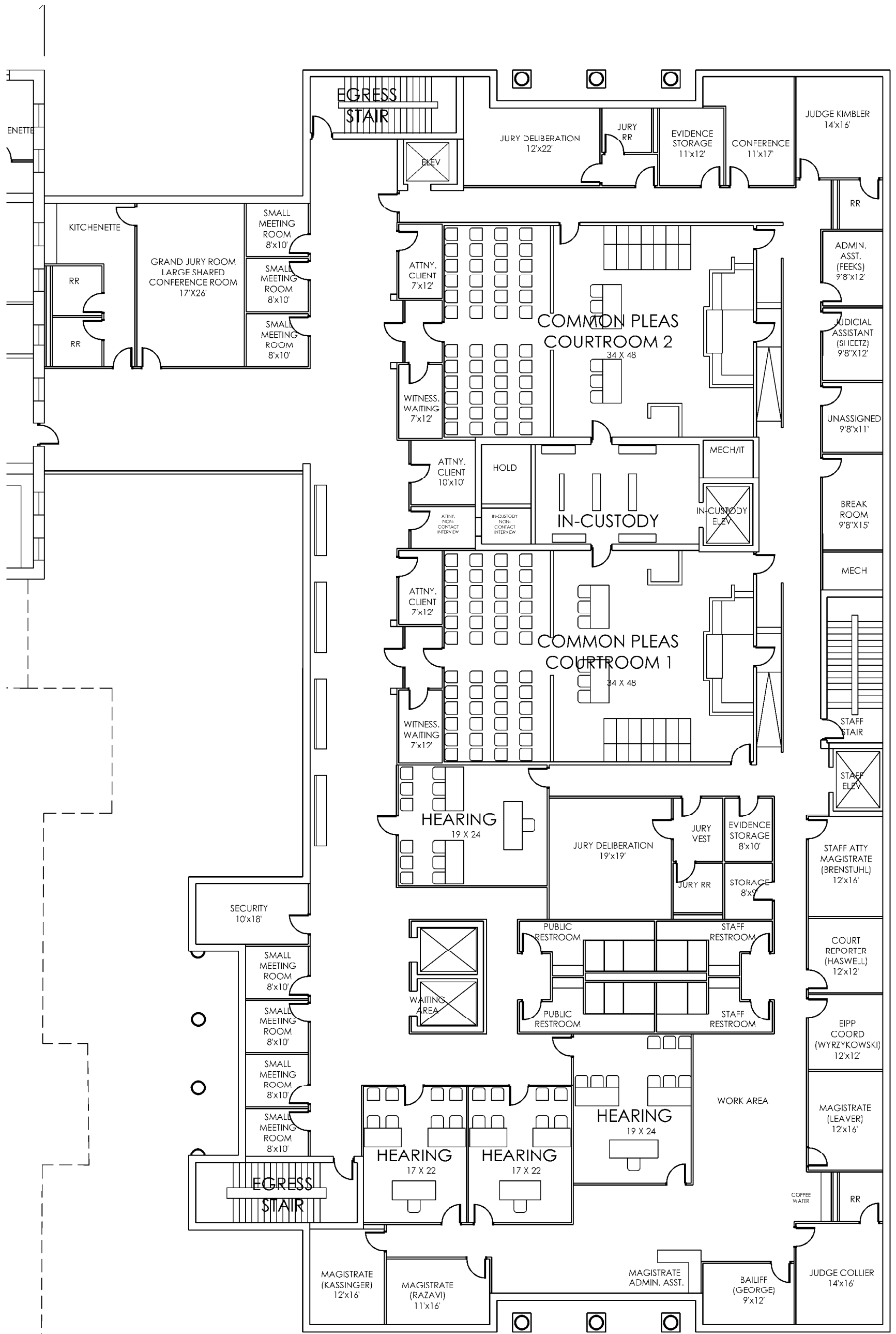
SECOND LEVEL PLAN
not to scale



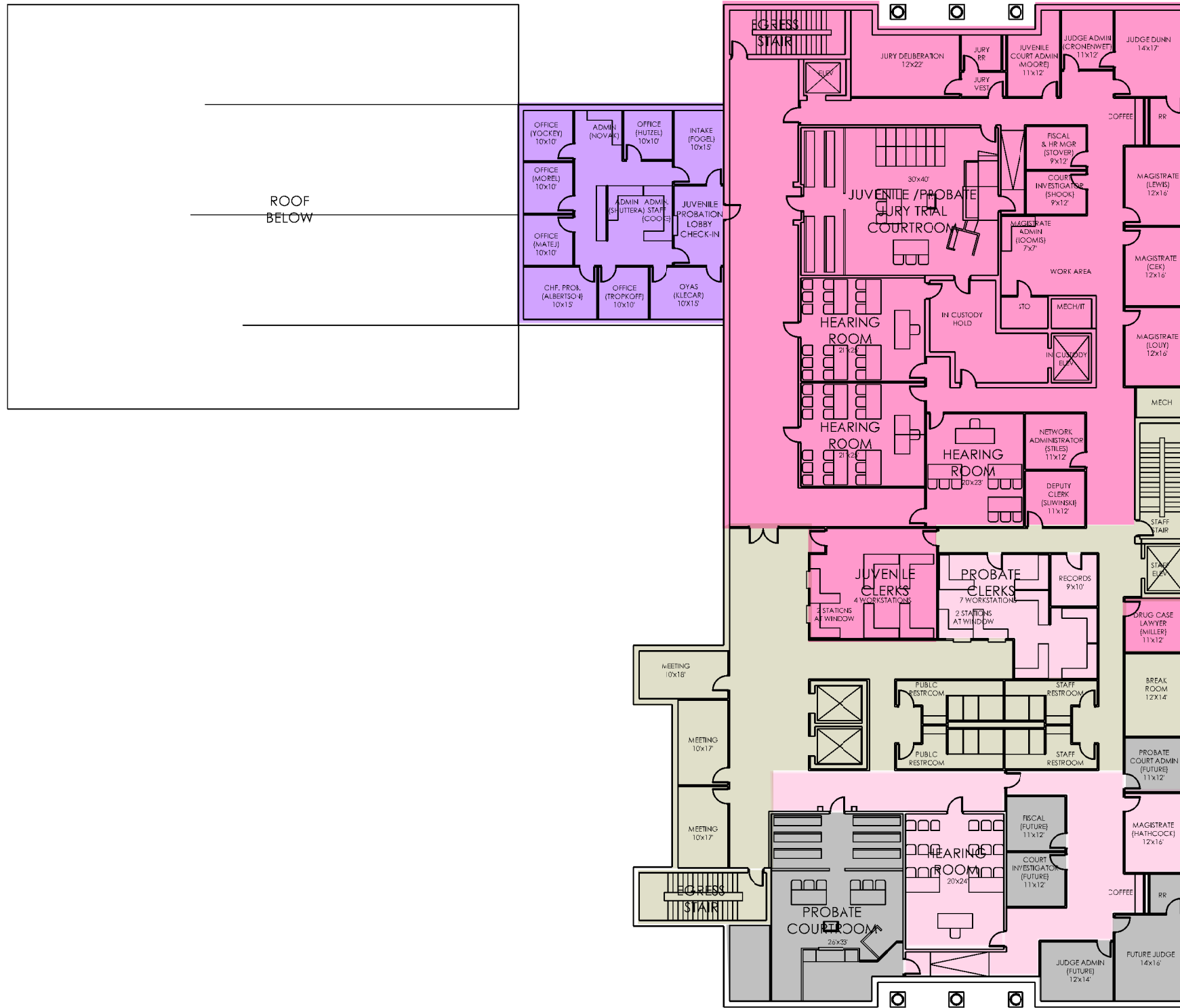
MEDINA COURTHOUSE
06-17-2020

RENOVATION | NEW CONSTRUCTION





COMMON PLEAS COURT

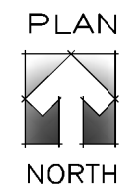


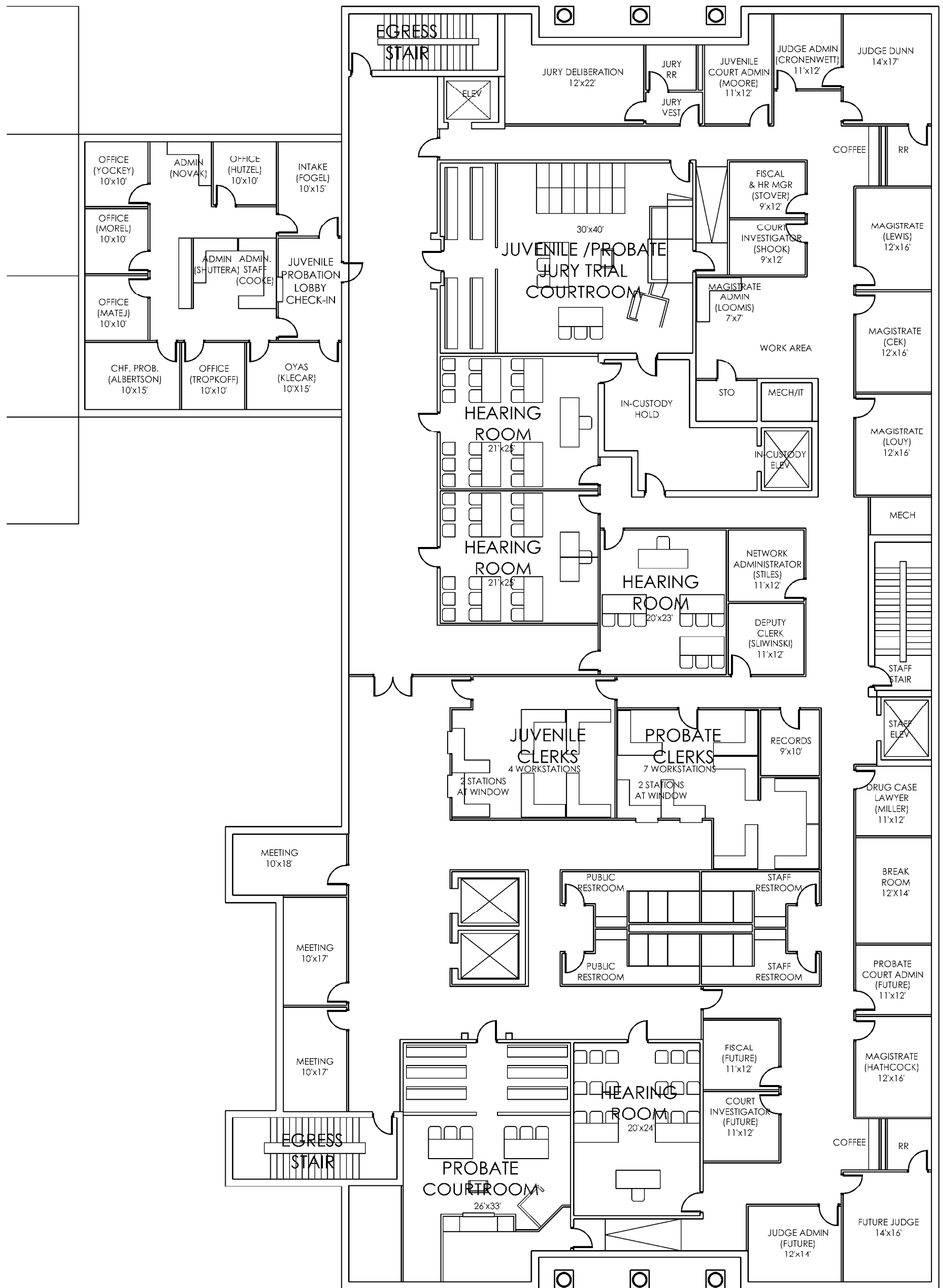
JUVENILE/PROBATE COURT
 JUVENILE PROBATION

21,900 SF NEW CONSTRUCTION

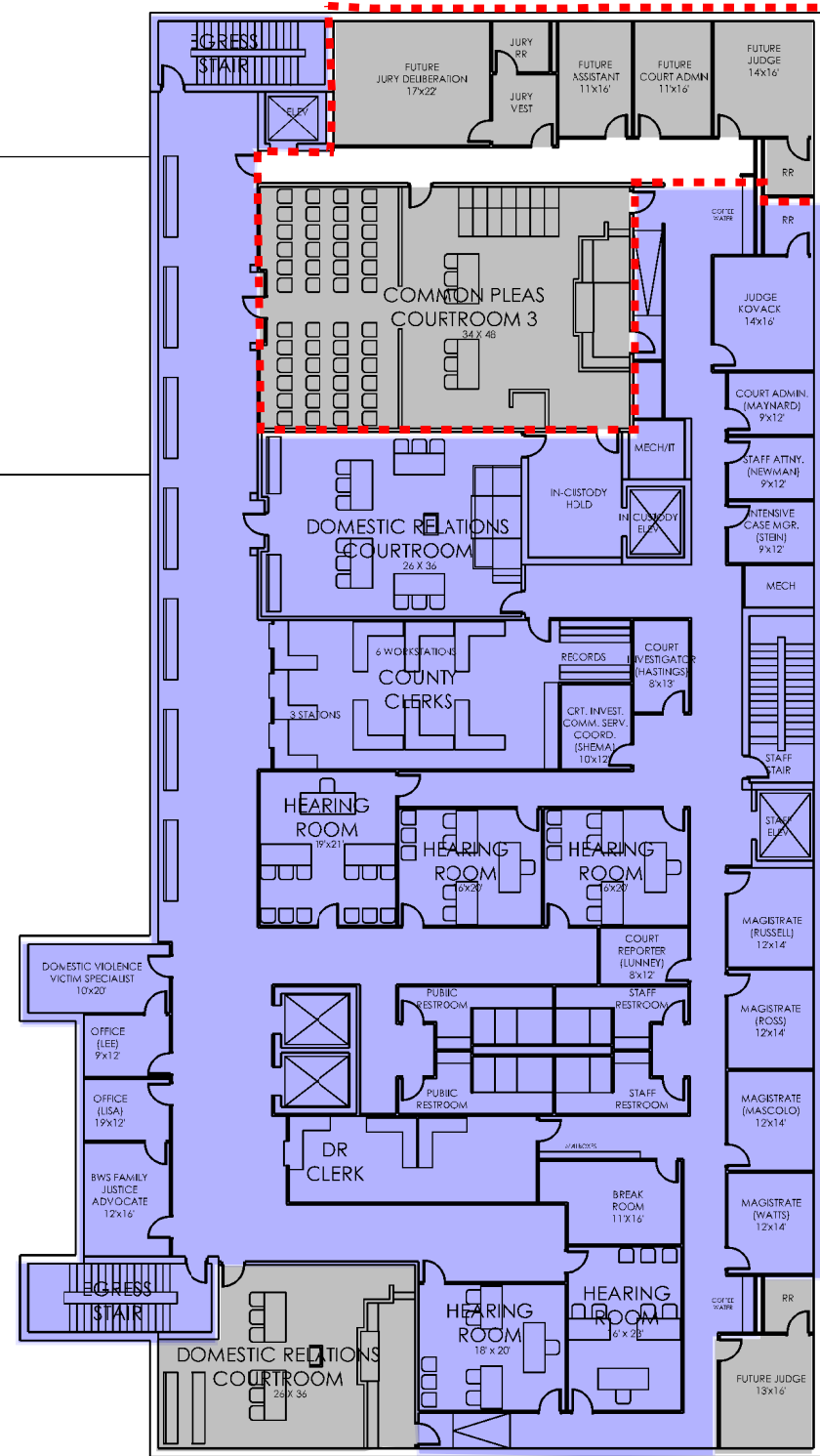
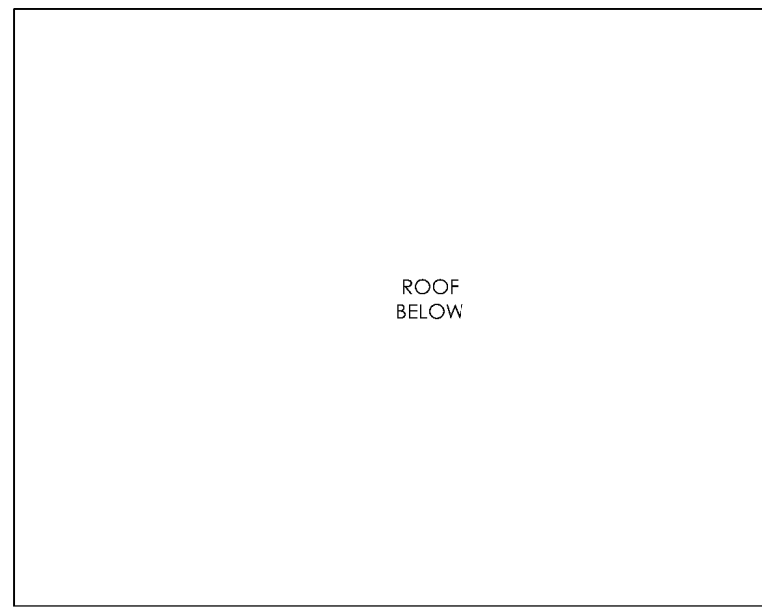
- JUVENILE COURT
- PROBATE COURT
- JUVENILE PROBATION
- SHARED
(BETWEEN JUVENILE/PROBATE)
- WHITE BOX/FUTURE
(NO FINISHES OR FURNITURE)

THIRD LEVEL PLAN
 not to scale





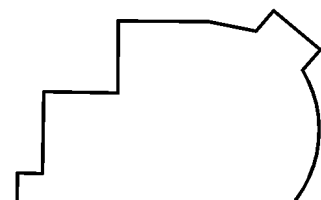
JUVENILE / PROBATE COURT



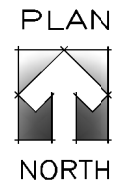
DOMESTIC RELATIONS COURT
FUTURE COMMON PLEAS COURT

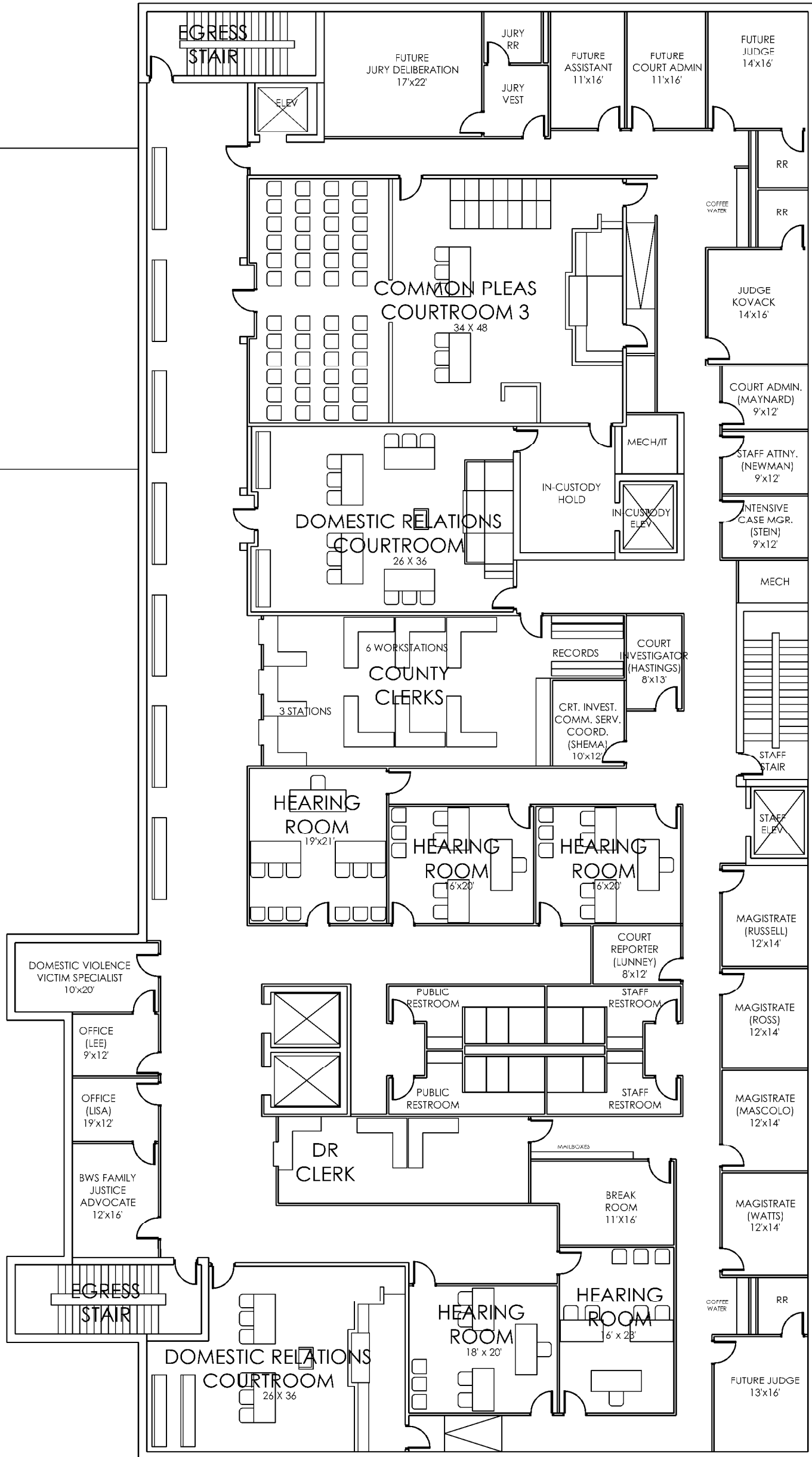
20,030 SF NEW CONSTRUCTION

- DOMESTIC RELATIONS COURT
- WHITE BOX/FUTURE (NO FINISHES OR FURNITURE)
- COMMON PLEAS FUTURE COURTROOM:



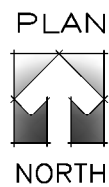
**FOURTH LEVEL PLAN
not to scale**





**DOMESTIC RELATIONS COURT
FUTURE COMMON PLEAS COURT**

FOURTH LEVEL PLAN
1/16" = 1'-0"



MEDINA COURTHOUSE
06-17-2020