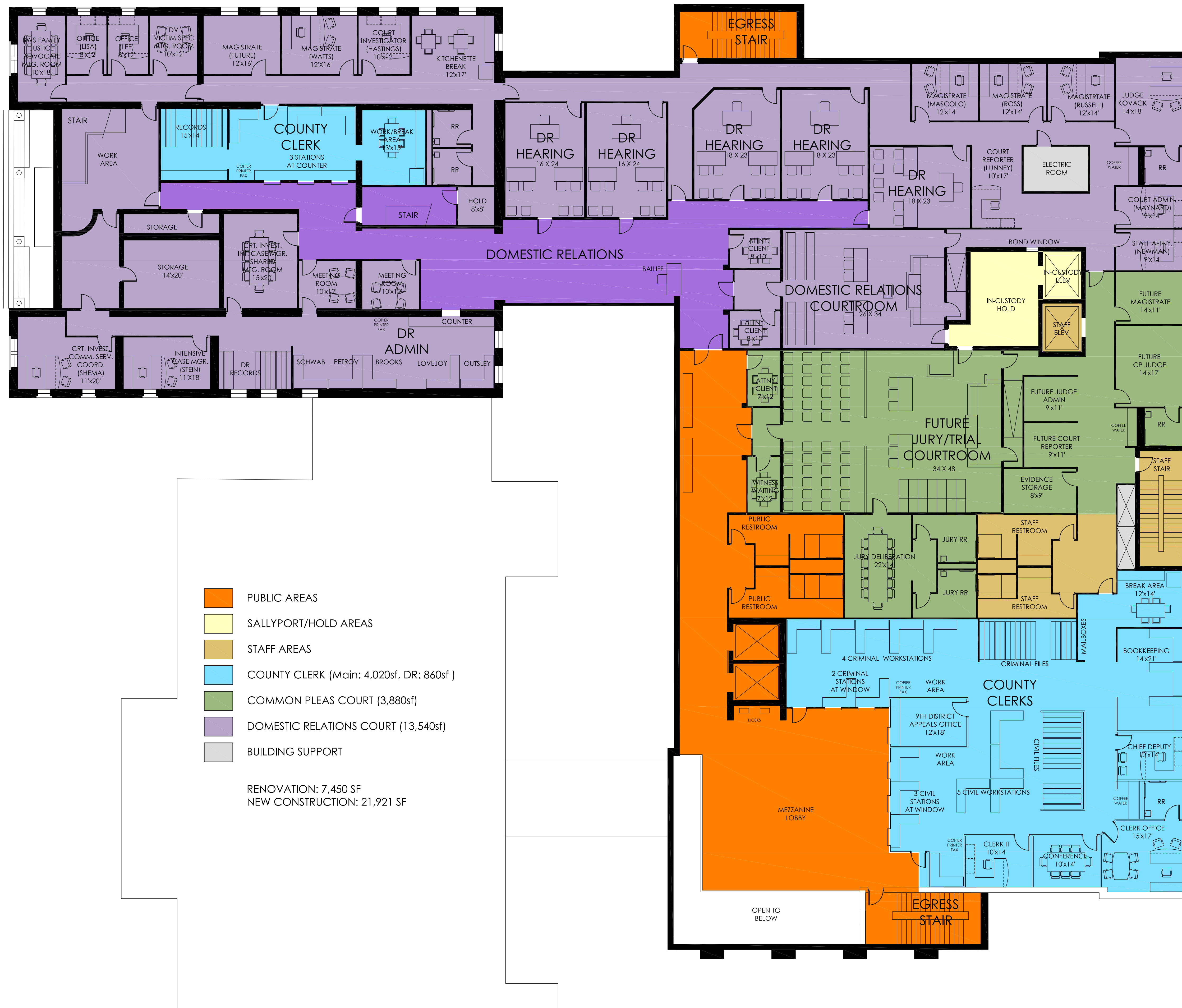




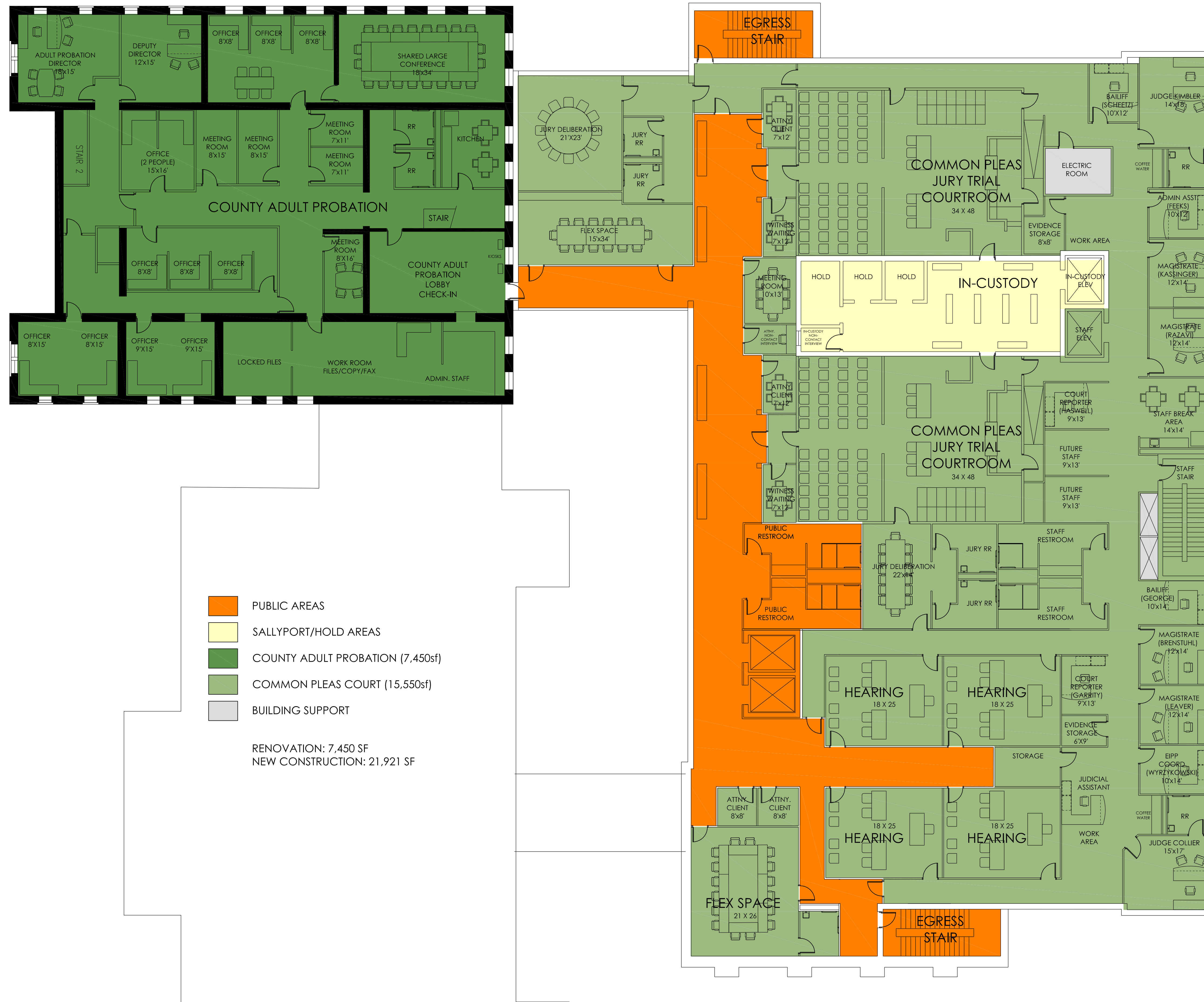
- PUBLIC AREAS
- SALLYPORT/HOLD AREAS (3,500sf)
- SHERIFF/SECURITY OFFICES
- STAFF AREAS
- COUNTY CLERK (2,170sf)
- JUVENILE COURT (400sf)
- COUNTY ADULT PROBATION (400sf)
- DOMESTIC RELATIONS COURT (580sf)
- TESTING LAB (765sf)
- CIVIL OFFICES (560sf)
- BUILDING SUPPORT

RENOVATION: 6,186 SF
 NEW CONSTRUCTION: 23,036 SF



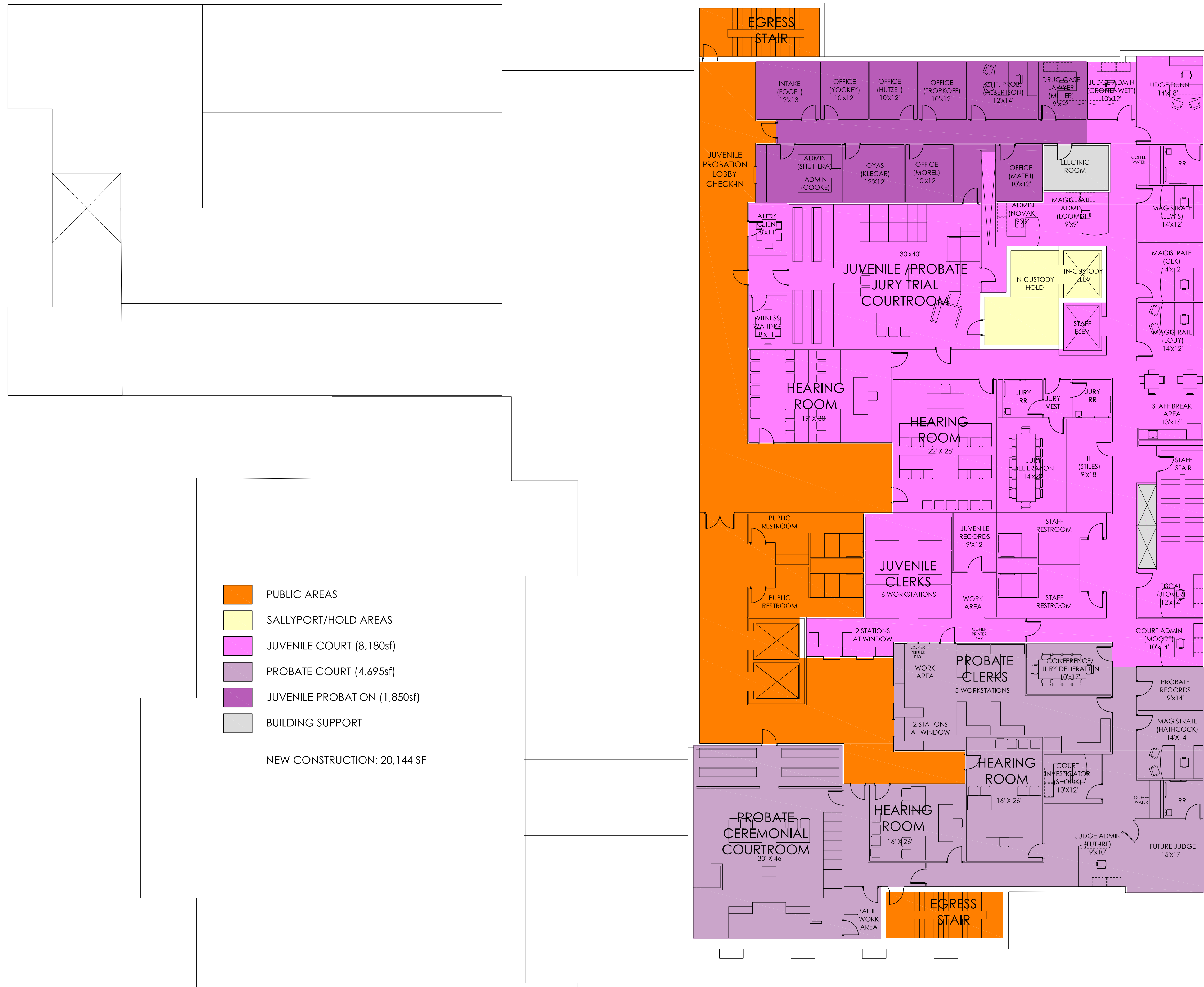
- PUBLIC AREAS
- SALLYPORT/HOLD AREAS
- STAFF AREAS
- COUNTY CLERK (Main: 4,020sf, DR: 860sf)
- COMMON PLEAS COURT (3,880sf)
- DOMESTIC RELATIONS COURT (13,540sf)
- BUILDING SUPPORT

RENOVATION: 7,450 SF
 NEW CONSTRUCTION: 21,921 SF



- PUBLIC AREAS
- SALLYPORT/HOLD AREAS
- COUNTY ADULT PROBATION (7,450sf)
- COMMON PLEAS COURT (15,550sf)
- BUILDING SUPPORT

RENOVATION: 7,450 SF
 NEW CONSTRUCTION: 21,921 SF



- PUBLIC AREAS
- SALLYPORT/HOLD AREAS
- JUVENILE COURT (8,180sf)
- PROBATE COURT (4,695sf)
- JUVENILE PROBATION (1,850sf)
- BUILDING SUPPORT

NEW CONSTRUCTION: 20,144 SF